

29 MAIN STREET LOFTS
 LOWER LEVEL A

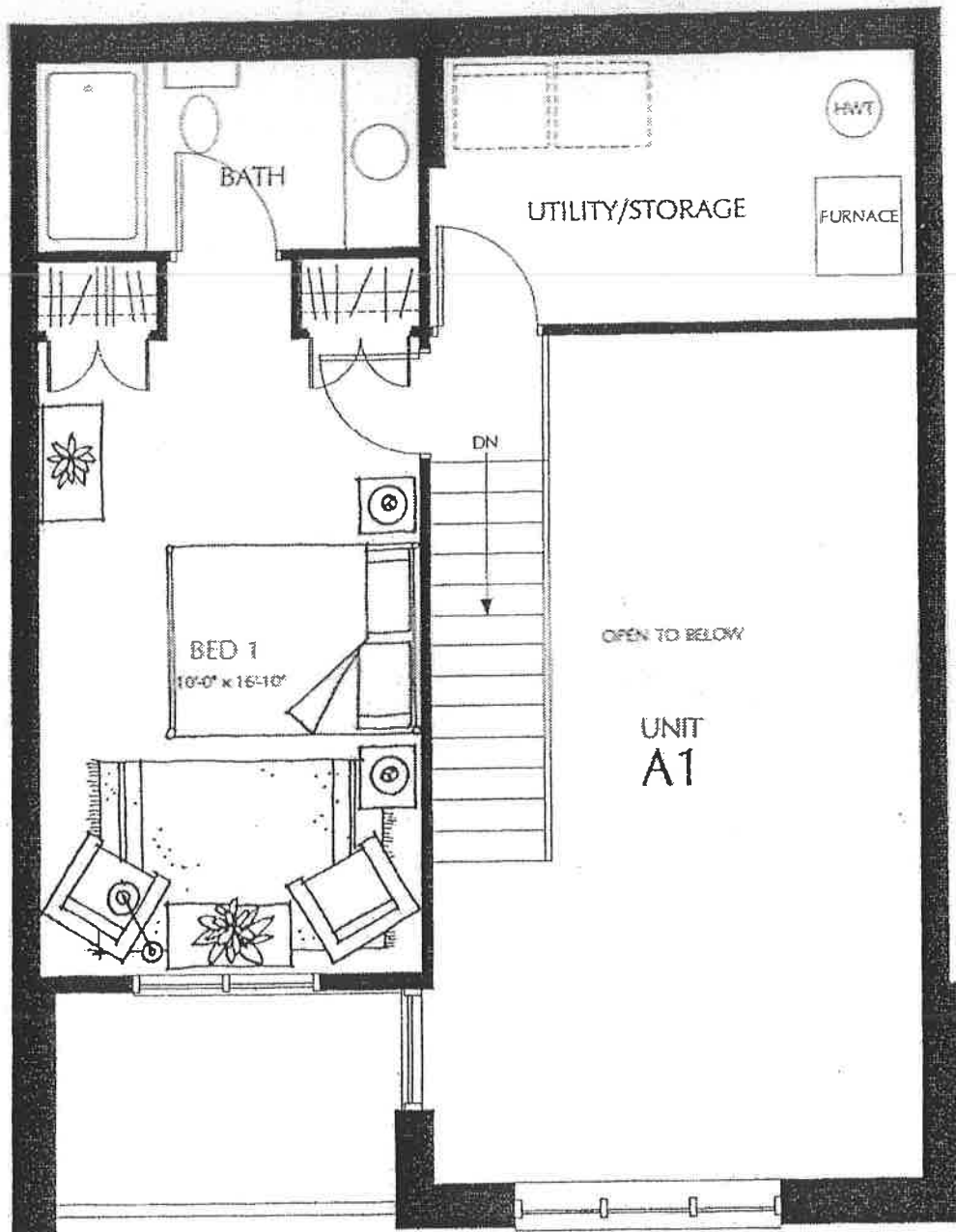
1023 SQ.FT INCLUDING UTILITY AREAS
 NOTE: DIMENSIONS OF IRREGULAR ROOMS ARE TAKEN FROM MID POINT



Charlesfort
 Development
 Corporation

THE GLASSWORKS





29 MAIN STREET LOFTS
 UPPER LEVEL A1 -ALTERNATE -2 BEDROOM

NOTE: DIMENSIONS OF IRREGULAR ROOMS ARE TAKEN FROM MID POINT



Charlesfort
 Development
 Corporation

THE GLASSWORKS

BARRY J.
 HOBIN
 & ASSOCIATES
 ARCHITECTS
 INCORPORATED